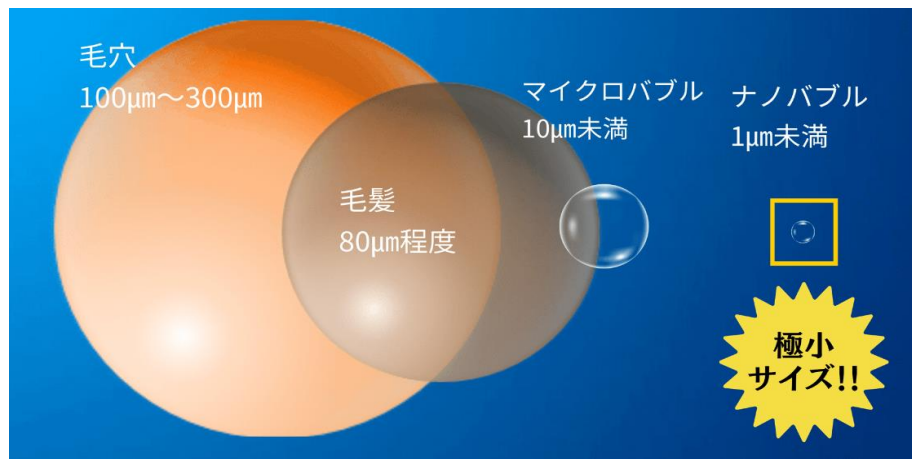


洗浄力UPで時短！水道代は削減！

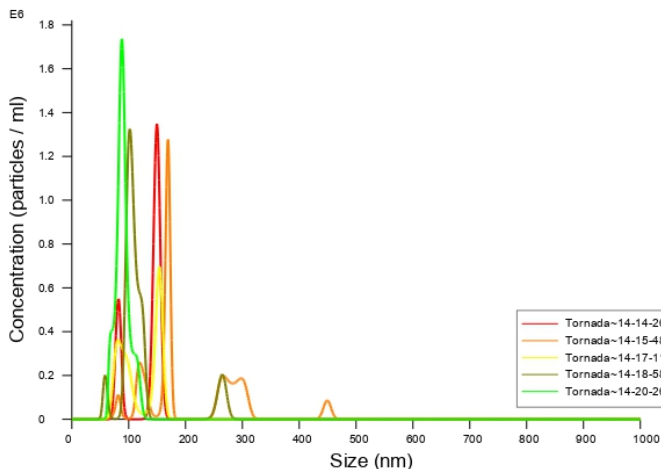
# 馬洗用シャワーヘッド

## POINT

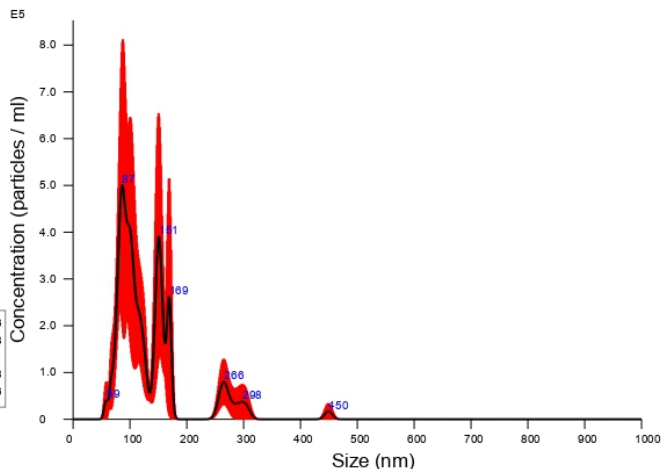
馬洗い作業の時短	トルネード水流による水圧UP！ ナノバブルによる洗浄力UP！！ 時短により水道代&ガス代節約！
常時節水	常時節水効果20%（水道代が月5万の場合、月1万削減） 更に、節水スイッチ付（オンオフ/水量調節可）
大容量ナノバブル	2層式（3210万個/cc x24箇所=77040万個）



# NANOSIGHT



FTLA Concentration / Size graph for Experiment:  
TornadaSW2023220-1 2023-08-09 14-14-19



Averaged FTLA Concentration / Size for Experiment:  
TornadaSW2023220-1 2023-08-09 14-14-19  
Error bars indicate +/- 1 standard error of the mean

## Included Files

TomadaSW2023220-1 2023-08-09 14-14-26  
TomadaSW2023220-1 2023-08-09 14-15-48  
TomadaSW2023220-1 2023-08-09 14-17-11  
TomadaSW2023220-1 2023-08-09 14-18-58  
TomadaSW2023220-1 2023-08-09 14-20-26

## Details

NTA Version: NTA 3.2 Dev Build 3.2.16  
Script Used: SOP Standard Measurement 02-14-17PM 09~  
Time Captured: 14:14:19 09/08/2023  
Operator: TOSSLEC CO.,LTD nakagawa  
Pre-treatment: --  
Sample Name:  
Diluent: --  
Remarks: TomadaSW2023220-1

## Capture Settings

Camera Type: sCMOS  
Laser Type: Blue405  
Camera Level: 14  
Slider Shutter: 1259  
Slider Gain: 366  
FPS: 25.0  
Number of Frames: 1498  
Temperature: 28.0 - 28.1 °C  
Viscosity: (Water) 0.829 - 0.831 cP  
Dilution factor: Dilution not recorded

## Analysis Settings

Detect Threshold: 4  
Blur Size: Auto  
Max Jump Distance: Auto: 14.2 - 31.6 pix

## Results

Stats: Merged Data

Mean: 132.7 nm  
Mode: 86.5 nm  
SD: 63.2 nm  
D10: 79.3 nm  
D50: 111.1 nm  
D90: 177.6 nm

Stats: Mean +/- Standard Error

Mean: 134.3 +/- 19.4 nm  
Mode: 132.5 +/- 15.8 nm  
SD: 42.1 +/- 12.1 nm  
D10: 88.1 +/- 8.2 nm  
D50: 126.9 +/- 14.5 nm  
D90: 193.9 +/- 35.3 nm

Concentration: 3.21e+007 +/- 3.06e+006 particles/ml  
1.6 +/- 0.2 particles/frame  
2.1 +/- 0.3 centres/frame

1 箇所あたりのバブル数量  
× 24 箇所 = 77040万個